



Science and  
Technology  
Facilities Council

# Discover what's possible

## Early careers opportunities Graduates, Industrial and Summer Placements

Ask some of the biggest questions in the universe, explore the unknown and help change the world around us.

Explore careers at STFC  
[stfccareers.co.uk](http://stfccareers.co.uk)





## Introduction

We know that you want to use your talent, skill, and dedication to make a difference and at STFC you will get the opportunity to do just that.

Your work will support world-leading science and innovation and enable ground-breaking research that will inspire, shape, and define our future.

Whether you're a graduate or a placement student, all our early career roles have an impact on life across the globe.

Recruiting into a range of engineering, scientific, computing, and organisational support roles, STFC provides a unique environment in which to challenge yourself and develop real expertise.





# About STFC

The Science and Technology Facilities Council (STFC), part of UK Research and Innovation, is a place where scientists, technologists, engineers and business support teams explore the unknown and turn what they find into work that changes the world around us.

We are trusted to support, enable, and undertake cutting-edge projects in an amazing diversity of fields that you could be a part of. With access to our world-class facilities, people like you are helping us to drive ground-breaking advances in science, engineering, computing, and technology.

Our work is focused on inspiring impact – to make a real-world difference to people's lives and the environment around us. Whether it's sending probes into space or finding new ways to treat cancer, everyone here plays a vital role in making a positive difference to society.

## Make an impact

Change the world around you by working on the big stuff – the projects that touch many lives. This is prestigious work that builds on our reputation for passion, at the cutting edge of science and engineering.

## Great and varied work

Fire your imagination in a role that is interesting and exciting. The challenge is always evolving, so you'll always be learning. You'll contribute to human discovery on an unprecedented scale.

Being part of one of Europe's largest research organisations means you'll have access to world-class facilities, collaborate with the brightest, most curious minds and have the freedom to explore, ask questions and make an impact from day one.

## Why join STFC?

Thanks to an unrivalled combination of expertise, facilities and resources, we're in a unique position to drive knowledge and innovation in the UK and throughout the world. The work we do helps to shape societies, strengthen economies, build industries, create jobs and transform lives. So just imagine what we can do for your career.

Our graduate development programme bridges the gap between academic and professional qualifications. Our graduates join us in a permanent position, starting a real job from day one. Graduates enjoy two years of formal soft skills training together with technical training and development, as well as on the job experience. Our graduates take an influential role shaping the future of science, engineering and technology.

Each year we also offer opportunities to undergraduate sandwich students to gain practical experience, collaborating with technical professionals at the forefront of scientific research. We offer invaluable experience with exposure to world class science and technology, and the opportunity to develop partnerships that continue well after your placement has finished.

## Join us and discover what's possible



# Inspiring locations

We're based across the UK and collaborate with partners around the globe. We collaborate with our international partners such as CERN in Switzerland.

## Daresbury Laboratory, Cheshire



Our facility in Cheshire has been at the forefront of pioneering international scientific research for over fifty years. 300 employees continue to push the boundaries of modern science in fields such as accelerator science, biomedicine, physics, chemistry, materials, engineering and high performance computing.

## Polaris House, Wiltshire

Polaris House is a large modern building set in its own grounds in Swindon. Here staff work in areas such as science strategy and programme management as well as a range of professional, technical and support roles.

## Rutherford Appleton Laboratory, Oxfordshire

Our expanding laboratory in South Oxfordshire is currently home to 1300 employees, visiting scientists and PhD students. It hosts some of the UK's major scientific facilities; providing a thriving and collaborative environment for research in particle physics, space science, materials, computational science, mechanical and electrical engineering, lasers and data intensive science.

## UK Astronomy Technology Centre, Edinburgh

The UK Astronomy Technology Centre (UK ATC) is a national centre of excellence for the development of scientific instrumentation and facilities for ground and space-based astronomy. Our team of around 80 employees, based at the Royal Observatory in Edinburgh, have a world-class reputation for astronomy, building and designing telescopes and control systems.

## Boulby Underground Laboratory, Yorkshire

Boulby is a special place for science; 'a quiet place in the Universe' where studies can be carried out almost entirely free of interference from natural background radiation. It's so far down you need to take a lift to get there.

## Chilbolton Observatory, Hampshire



Chilbolton Observatory is home to a wide range of science facilities covering research in atmospheric science, radio-communications, astronomy, space science and technology. The Space Monitoring Facility harnesses the power of the 25m antenna to track and characterise Earth orbiting satellites.



# Life at STFC

Everyone at STFC has the freedom to explore, learn and connect, as part of a community that loves to share knowledge and support one another. We champion the mental and physical wellbeing of our people through all we do, providing training, resources and improved ways of working. We offer flexible and remote working, 30 days holiday (plus bank holidays), enhanced maternity, shared parental leave, adopted leave and use of nurseries where available. We also provide a confidential counselling service, which is available 24 hours a day, 7 days a week.

We have a range of employee diversity, inclusion and network groups, including but not limited to a Women in STEM network, a Carers Network, Parents Support Group, LGBTQ+ network and Mental Health First Aiders. These networks provide our people with peer support, networking opportunities and the chance to lead positive change.

*"Our WiSTEM network has an active committee that works to organise a popular programme of well attended monthly events across the National Labs – providing networking opportunities and creating a forum to discuss and raise common issues faced by women."*

Women in STEM

*"As a parent, I find the flexible working arrangements at STFC make a huge difference to my ability to balance the demands of work and family life, and ultimately to my own wellbeing. Hybrid working and flexible hours means I can focus on getting my work done in a way that fits with my caring responsibilities.."*

Katharine Robertson, Head of Campus Development at Daresbury Laboratory

## Projects that change the world

We seek to understand the Universe from the largest astronomical scales to the tiniest constituents of matter, while creating an impact on a very tangible, human scale. Our work saves lives, expands knowledge and moves society forward. Our success stories include:

- Stepping up during Covid and providing 13,437 ventilators to the NHS as part of Ventilator Challenge UK
- Designing probes that observe previously unknown phenomena in space
- Developing truly green fuel for the aviation industry, promoting sustainable travel
- Harnessing particle physics to develop MRI scanners and transform healthcare for millions worldwide

*"It's a fabulous environment to thrive and develop and make a great contribution to our society."*

Steve, Electrical Engineering Group Leader



# Graduate Scheme

We know that you want to use your talent, skill and dedication to make a difference and at STFC you will get the opportunity to do just that. Your work will support world-leading science and innovation and enable ground-breaking research that will inspire, shape and define our future. Every one of our graduate roles has an impact on life across the globe.

You'll relish the challenge of having a job in which you can make an impact from day one. Joining one of our departments as a core member of the team, you will gain immediate exposure to exciting projects and challenges that will enable you to rapidly develop deep expertise and technical ability.

We provide an opportunity to really pursue your interests and passion early in your journey with us, supported by technical training, a broader programme of career support and training and development. Our dedicated Graduate Development Team will provide the right combination of challenge and support throughout, helping you achieve your ambitions.

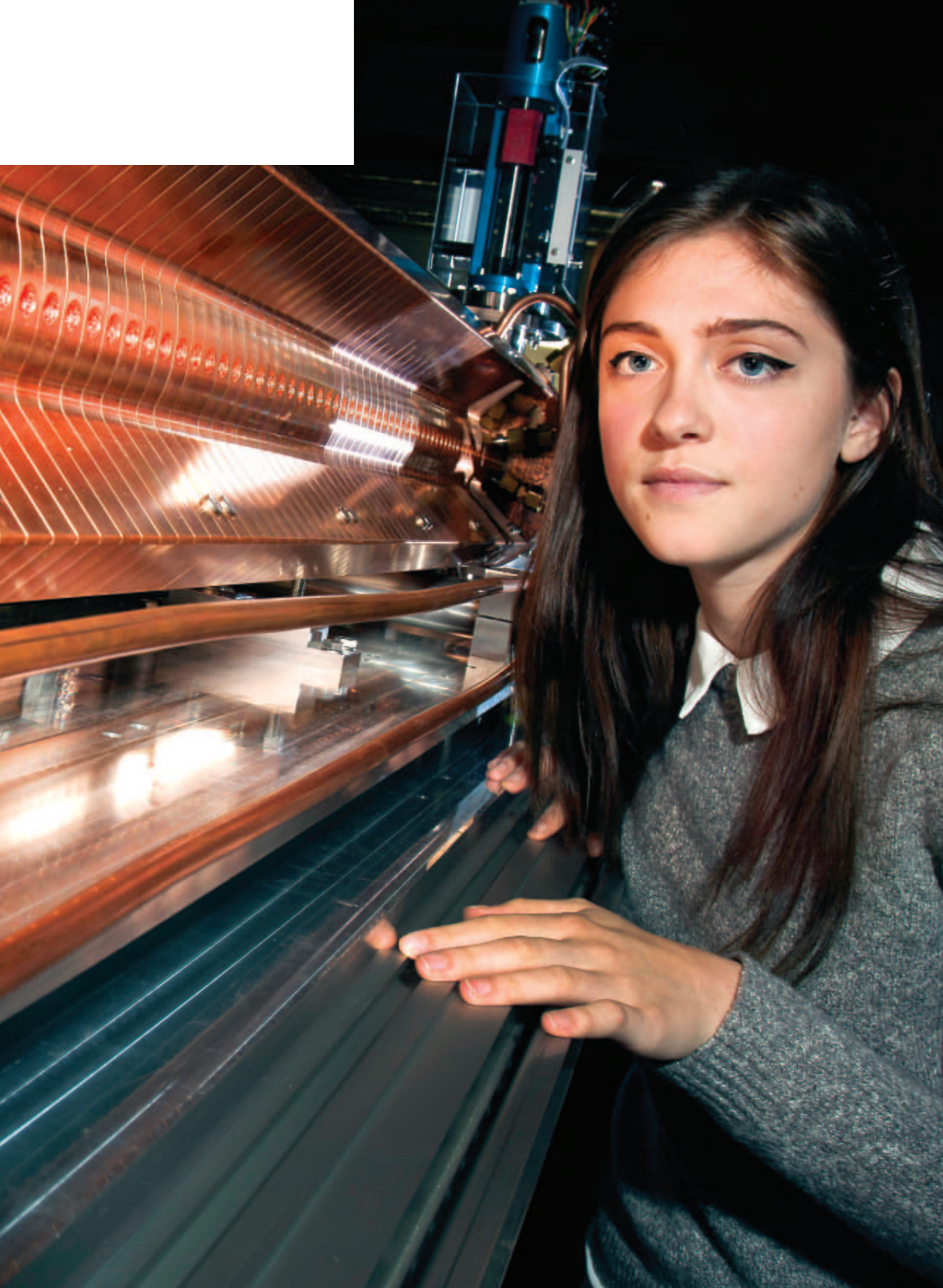
We know that professional recognition is important to you too, so we provide mentoring and expertise to help you achieve valued qualifications or chartered status in your chosen field.

You'll benefit from collaborating with world leading engineers, technicians and scientists – in addition to being part of a growing and vibrant graduate community – building networks and connections across STFC, UKRI, and beyond.

*"The mind set at STFC makes it a great place to work. My team and managers are mindful of a good work-life balance as well as being encouraging towards developing my skills and career. STFC provides many opportunities for you to develop in different areas, such as volunteering in outreach science events and attending mental health first aid training."*

**Francesca,  
Graduate Environmental Data Scientist**





# Graduate Scheme Benefits

## What can you expect during your STFC graduate scheme?

- A benefits package designed to provide an excellent work/life balance including 30 days' annual leave, 10.5 public and privilege holidays, flexible working hours and an exceptional pension scheme
- You'll get the chance to work on cutting-edge projects with international collaborators
- Cycle-2-work scheme
- Regular sporting events and other clubs and societies
- Discount vouchers for high street stores and attractions

## Eligibility

To be considered for our graduate scheme you must have:

- Achieved, or be on course to achieve, a minimum 2.1 degree in a relevant field of study

Explore more at:

[stfccareers.co.uk/rewards-and-benefits](https://stfccareers.co.uk/rewards-and-benefits)



# My experience on the Graduate Scheme

Becky, Graduate Controls Software Engineer

## What is your current role at STFC?

I am a Graduate Controls Software Engineer at the Central Laser Facility. I use something called EPICS (Experimental Physics and Industrial Control System) to control various devices such as laser optics, cameras, motors and sensors. The software I write allows scientists to read from and write to these devices from any PC in our system.

## What interests you about STFC?

I love the fact that everything STFC does is for our betterment. Advances in science and technology mean we can learn more about the world around us, help to solve global challenges and improve our day to day lives. The different facilities and departments work on completely different projects and it's really interesting to learn about all the amazing achievements coming from each of them.

## What did you enjoy most in your first 6 months?

I have enjoyed so many different aspects of my first six months here. I have worked on a number of small individual projects and have found each of them challenging yet rewarding and they have been very varied. I've enjoyed getting to know my team and working with them. I've had both technical and non-technical training that I've found very interesting and useful.

## What is it like to work at STFC?

The working environment is fantastic. People here are proud of what they work on and there is generally a lot of passion and enthusiasm. I feel I am encouraged to develop my skills and knowledge and I really value the training we receive as part of the graduate scheme. Although graduates are "in training", we're trusted on important projects and work on the same things as other team members.

In addition, there are plenty of "extra-curricular" activities to get involved in. There are many working groups, clubs and events. For example, I'm part of the Women in STEM group, I sometimes go to the pub quiz on a Wednesday lunchtime and I'm planning on trying out the Bootcamp fitness classes run on site soon.





# Industrial and Summer Placements

Student life is great, but taking time out to gain experience of the workplace can be both a rewarding and invaluable experience as you choose your path ahead. STFC can offer you the opportunity to make a difference from day one. Everything we do has an impact globally and our Industrial and Summer Placements are no exception.

We can offer an incredibly diverse range of placements in which you will be working alongside world leading engineers, scientists and technicians in highly collaborative environments. Whichever you choose, you'll become a critical member of the team in which you will be exposed to exciting projects and challenges from the start.

We don't believe that one size fits all – so we'll provide challenges that match your skills, and each placement is a unique opportunity to pursue your career interests. You'll be supported every step of the way by our dedicated Graduate Development Team who will also ensure you benefit from a range of personal development opportunities.

## Eligibility

In order to be eligible for STFC's **Industrial Placement** scheme, you should:

- currently be enrolled on an undergraduate degree course and returning to university/studies to complete your undergraduate degree following the placement
- be required or have requested to take a placement year
- have the right to live and work in the UK for the duration of the placement

In order to be eligible for STFC's **Summer Placement** scheme, you should:

- be in full time education at university and returning to university/studies to complete your undergraduate degree following the placement
- have the right to live and work in the UK for the duration of the placement
- be able to commence employment in summer 2024

Academic ability and a strong interest in your field is important too, and each vacancy will detail the skills and knowledge we're looking for. But we'll also strongly value your drive for excellence and passion for collaboration. You'll bring a clear commitment to your own development and be ready to seek out and grasp new opportunities for both professional and personal growth.





# My experience on the Industrial Placement

Katy, Finance Industrial Placement Student

"I have thoroughly enjoyed my year working as a placement student within the finance department. The whole team were so welcoming, I felt like part of the team in no time. I was given a lot of responsibility within my role which allowed me to be relied on by my team which helped me grow into the role.

I was able to pick up extra things such as organising the Christmas party and BBQ and becoming part of the quiz team which I loved doing.

I was able to take part in extra courses from Excel to CV writing. I learnt so much over my year at STFC and the team were so helpful that I felt I could always ask when I was unsure. I feel as though I had experience in a wide range of tasks which will really help me when it comes to finding future employment. I cannot recommend a placement year with STFC enough!"





Science and  
Technology  
Facilities Council

Graduate and Industrial Placement roles will be advertised from September, and Summer Placements will be advertised from January.

Find out more: [stfccareers.co.uk/early-careers](https://stfccareers.co.uk/early-careers)

Apply for jobs: [careersportal.co.uk/UKRI-careers/jobs/search/700860](https://careersportal.co.uk/UKRI-careers/jobs/search/700860)

 @STFC\_Matters

 STFC

 Science and Technology Facilities Council

 bigscience\_stfc

 @ScienceAndTechnologyFacilitiesCouncil